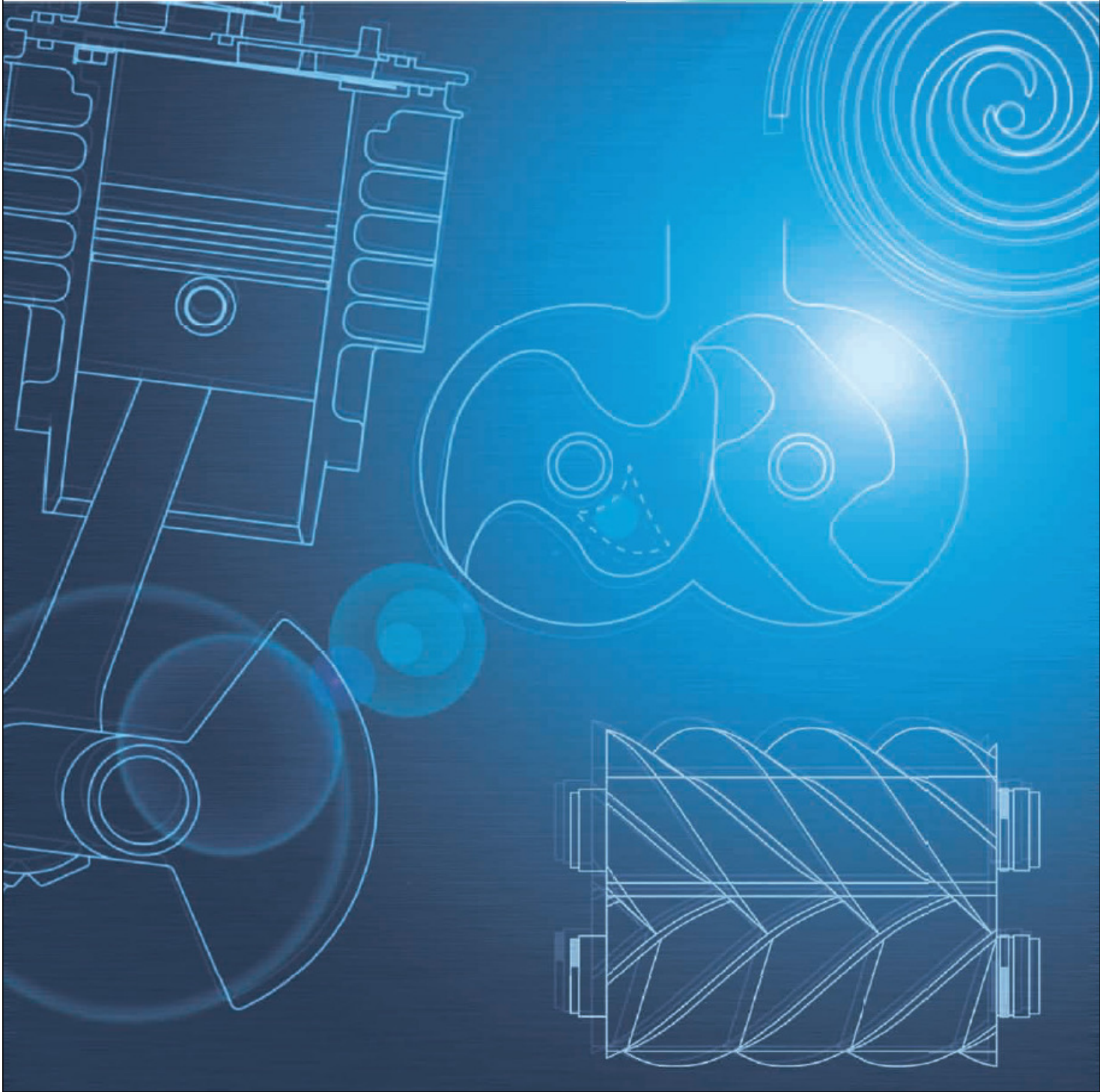


AIR COMPRESSOR

Oil-free (22 ~ 37 Kw)



Oilfree Claw **Absolute Air**



Always Ahead with ANEST IWATA

Middle Range Air Compressor

22kW/37kW

Oilfree Claw **Absolute Air**

FRL-220 FRL-370

This is an absolute oilfree claw compressor with high-efficiency, durability and clean air.



More Advanced Compressor with Claw in Body

This oil free compressor provides high level efficiency. It operates with about 1/3 or slower speed compared to general rotary compressor.



2-Stage Compressor with Perfect Air-Cooling

●Specification of claw body is for air cooling s without cooling liquid (oil, water and coolant). Extra subsidiary equipments are not required. It can be easily maintained.

●Compressor is 2-tage type. It cools heated compressed air by intercooler in the 1st stage in order to control extra thermal expansion under control. Then it effectively compress in the 2nd stage. Since compressed temperature is low (less heat load), performance can be stable.

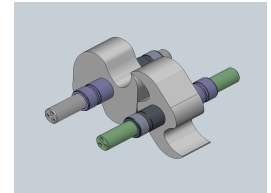
High Durability

- Compressor with unique shaped claw is comprised of male and female rotors. They rotates without touching each other, which leads to longer lasting operation without abrasion.
- Inner fase of casing and surface of female rotor are processed with special coating, which improves air tightness.
- Respective suction and discharge for rotors are symmetrically located. It provides longer bearing operational life without loading in axial direction.
- Precisely designed rotors are made by stainless steel and strong in anti-corrosion. And they are symmetrically located, which removes oscillation.



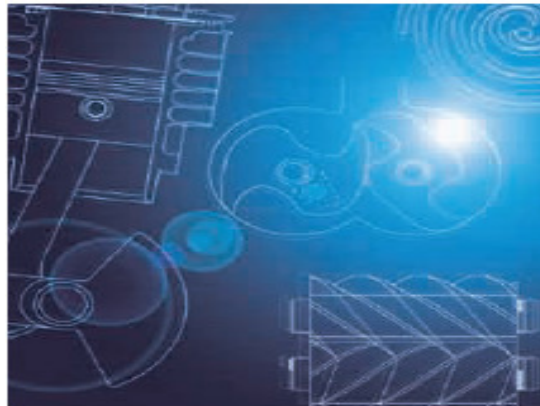
Energy Saving Operation by Fine Dual Control

Along with load & unload operation which saves energy, motor is provided with automatic start-stop control. Maximum 8- time automatic start-stop control (per hour) reduces wasted unload operation.



Touch Panel as Standard

It contains liquid crystal touch panel with high operability. Power failure auto recovery function is also equipped with maintenance display, failure display, remote operation & external output terminal.



<Specification>			FRL -220	FRL -370
Items/Format				
Compressor	Discharge Pressure	M Pa / Bar	0.7 MPa / 7 bar	
	Suction Gas / Pressure / Temperature		Air / Air Pressure / 0~ 40°	
	Discharge Air Amount	M ³ /min / CFM	3.7 / 131	5.8 / 205
	Drive Method		Direct Coupling / Gear Speed-up	
	Capacity Control Method		Fine Dual Control (Load & Unload Control + Back Pressure Decrease + Auto Start-Stop)	
	Discharge Air Temperature	°C	Suction Temperature +12	
	Air Ejector Diameter	B	G1	G1 1/2
	Lubricating Oil Filling Amount	L	25.5 L	
	Noise Value	dB(A)	65	68
Main Motor	Electric Motor Power Voltage	V Hz	Three phase 50Hz	
	Starting Method		Magnetic Star Delta (3 Contactor)	
	Electric Motor Type		Horizontal Flange, Triphase, Fully Open External Dust-Proof Fan, 2 poles, F Type Insulation IP55	
	Electric Motor Rated Power Output	kw	22	37
Motor	Electric Motor Type		Three phase, Fully Open External Dust-Proof Fan, 6 poles, F Type Insulation	
	Electric Motor Rated Power Output	kw	0.75 (200V50Hz / 60Hz, 220V/60Hz)	
Motor Pump	Electric Motor Type		Three phase, Fully Open External Dust-Proof Fan, 4 poles, B Type	
	Electric Motor rated Power Output	kw	0.4 (200V50Hz / 60Hz, 220V/60Hz)	
External Measurement (Width*Depth*Height)		mm	1770 x 1010 x 1660	
Amount (Including lubricating oil)		kg	1200	1335


Safety precautions

- Use air compressors in this catalog for air only. (Uses other than air can cause fire, damage, etc.)
- Never use respiratory equipment which directly sucks compressed air. (If done, it can cause serious injury.)

As we continuously develop and improve our products, models, specifications and photos are subject to change without notice.


ANEST IWATA Corporation

3176, Shinyoshida-cho, Kohoku-ku,
Yokohama 223-8501, Japan
Tel: 045-591-1122 Fax: 045-593-0524
<http://www.anest-iwata.co.jp/>

ANEST IWATA MOTHERSON LIMITED

B 123 -124 , Sector - 63, Noida - 201 301, Distt. Gautam Budh Nagar, Uttar Pradesh, India